



NOAA Training Results: MBNMS Regs & Summary Settlement

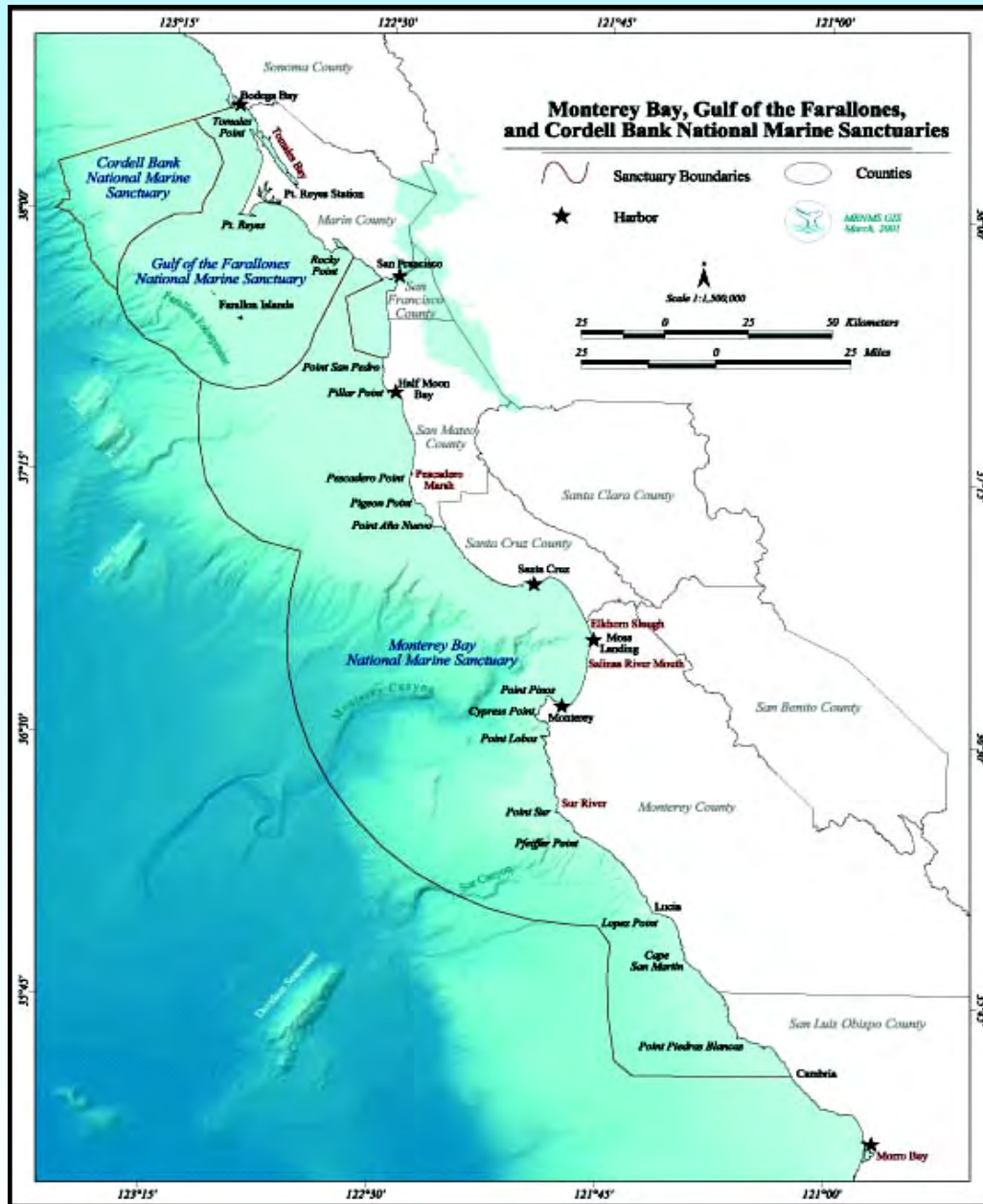
❖ **Topics**

- National Marine Sanctuary Act Regulations
- Marine Mammal Protection Act
- Endangered Species Act
- Lacey Act
- Magnusen-Stevens Fishery Conservation Management Act
- NOAA Summary Settlement Authority - NMSA & MSFCMA

❖ **Participants (Monterey & Morro Bay Training Sessions)**

- US Coast Guard - 48 (including 21 boarding officers)
- CA Department of Fish and Game - 9
- CA Department of Parks & Recreation - 2

NOAA Summary Settlement Authorization



❖ NMSA

- Seabed alteration (minor) - \$500/\$1000
- Discharge (< 1 gal) - \$500/\$1000
- MPWC zone violation - \$500
- Attracting a white shark - \$500
- Jade collection violation - \$300

❖ MFCMA

- Groundfish overages ($\leq 25\%$) - 2xFMV
- Failure to sort groundfish - \$750
- Failure to report/file landings - \$450
- No landing receipts aboard - \$300



Fall Enforcement Issues

- **Low Tides (Daylight) - Poaching/Construction**

Oct 7 - Oct 9 (-.65)
Nov 4 - Nov 6 (-1.00)
Nov 20 - Nov 21 (-.39)

- **Recreation Events**

Sentinel Triathlon (SC) - Sep
Harbor Day (HMB) - Sep
Paso Robles Airshow (BS) - Sep
Tri-Cal Triathlon (MY) - Sep
Big Sur Marathon - Sep
Salinas Airshow - Oct
City Fireworks Show (SC) - Oct
Lobster Row Comp. (SC) - Oct
Fleet Week (SF) - Oct
Wave Chaser Comp. (SC) - Nov
Mavericks Big Wave Surf Comp. (HMB) - Fall/Winter

- **Significant Fisheries Events**

Sport Crab Opener/Closure (San Francisco-Cambria) - Oct
Commercial Crab Opener/Closure (San Francisco-Cambria) - Nov
Sport Rockfish Closure (Boaters & Divers) - Nov
Sport Groundfish & Lingcod Closure (Pt Arena-Pigeon Pt) - Nov
Sport Groundfish & Lingcod Closure (Pigeon Pt-Pt Conception) - Nov
Lingcod All Closure - Dec

- **Snowy Plover Nesting - Mar-Sep**

- **MPA Encroachment**

- **Whale Watch Encroachment (Gray migration)**

- **Boating Casualties (general & holidays)**

- **Boat Scuttling (bad economy)**

- **General Aviation Encroachment**

- **Caltrans Hwy 1 Construction Activity**

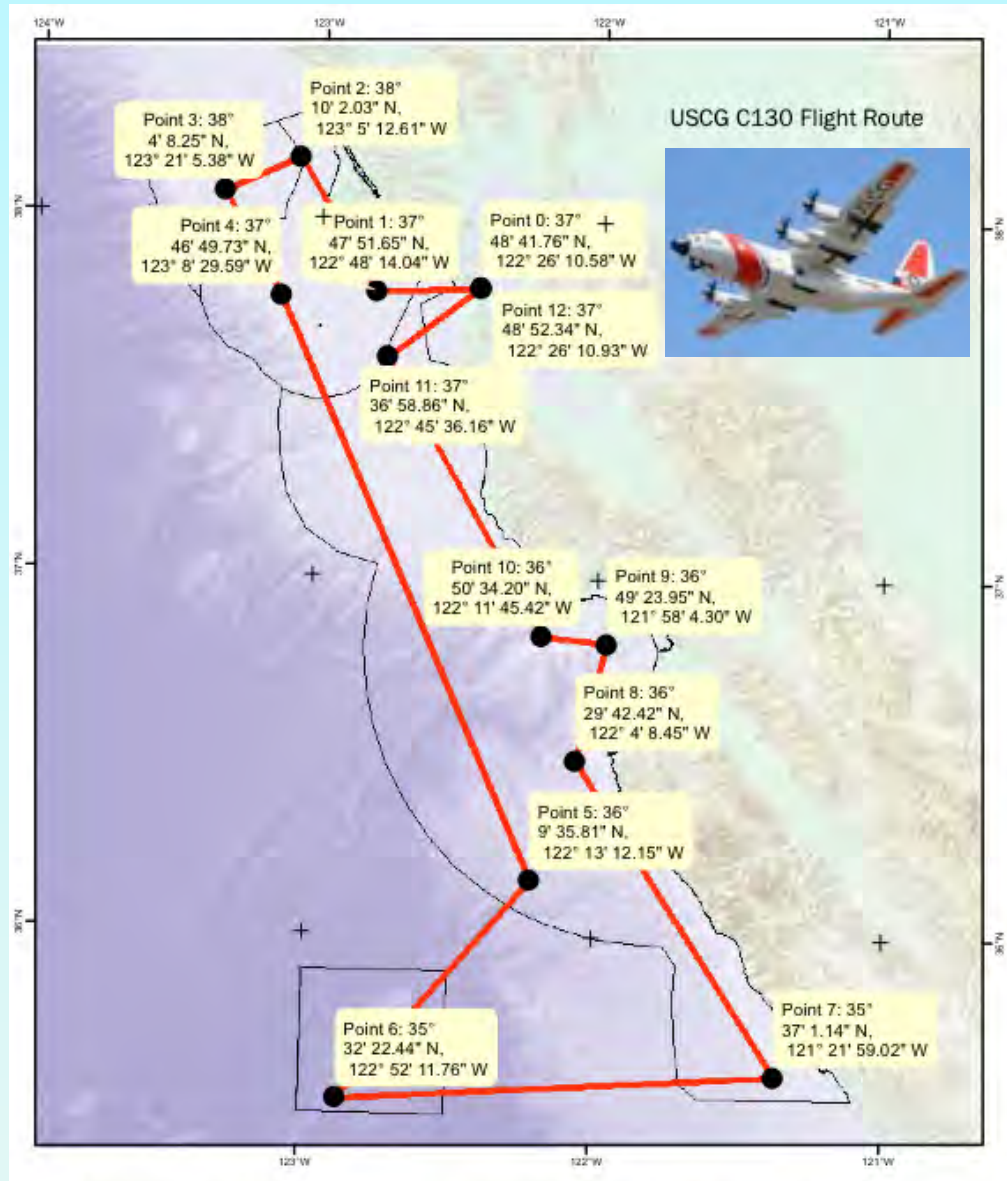
- **Jade Collection**

- **Sewage Overflows (storm activity)**

USCGC C-130 Sanctuaries LE Flights



USCG C-130 Sanctuaries LE Flights



- **Flight Time: 4 1/2 hours**
- **Altitude: 1,000 - 2,500 ft**
- **Geo-Referenced Video/Still Camera System**
- **Camera Modes: color, black/white, infrared**
- **Camera range: several miles**
- **Onboard Surface Radar**
- **Onboard AIS Receiver**
- **Onboard TCAS Receiver**
- **Excellent Flight Deck Visibility**
- **Large Port & Stbd Observation Windows**
- **Mission Crew Maximum: 8 (Flight Deck:3)**